

## DNBSEQ™ rWES service



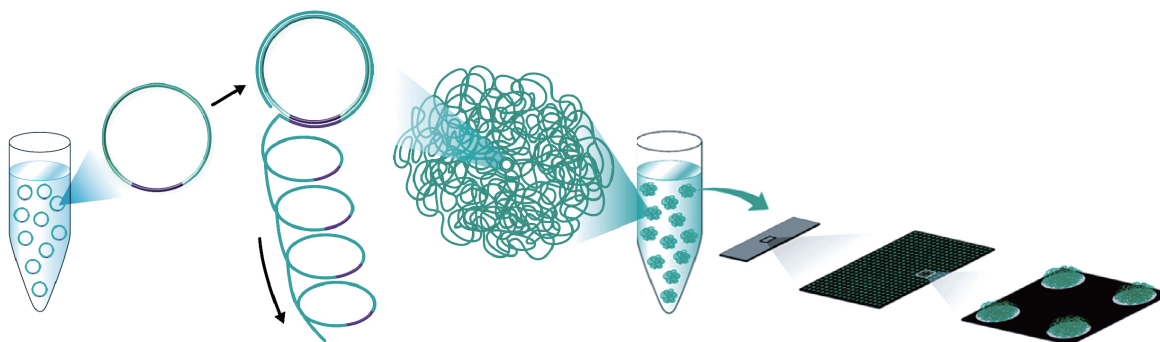
## Service Description

For many applications, Whole Exome Sequencing (WES) offers advantages as a viable and cost-effective alternative for Whole Genome Sequencing. With the development of precision medicine, WES is utilized more and more frequently in patient cases where the diagnoses or treatment options are unclear. Timely diagnosis can aid in treatment efficacy and better patient health outcomes.

BGI is now offering a **10-day rapid delivery whole exome sequencing** service from our CAP/CLIA certified laboratory to meet the needs of both academic and clinical research users where rapid delivery of results is paramount. Besides raw sequencing data output, BGI also offers standard and custom bioinformatics services to suit specific research needs.

## DNBSEQ™ Technology

Whole Exome Sequencing services are performed with BGI's proprietary DNBSEQ™ sequencing technology platforms. DNBSEQ™ is a high-throughput sequencing platform developed by a subsidiary of BGI, Complete Genomics, in Silicon Valley. This system is powered by combinatorial Probe-Ancor Synthesis (cPAS), linear isothermal Rolling-Circle Replication and DNA Nanoballs (DNB™) technology, followed by high-resolution digital imaging.



## BGI Advantages

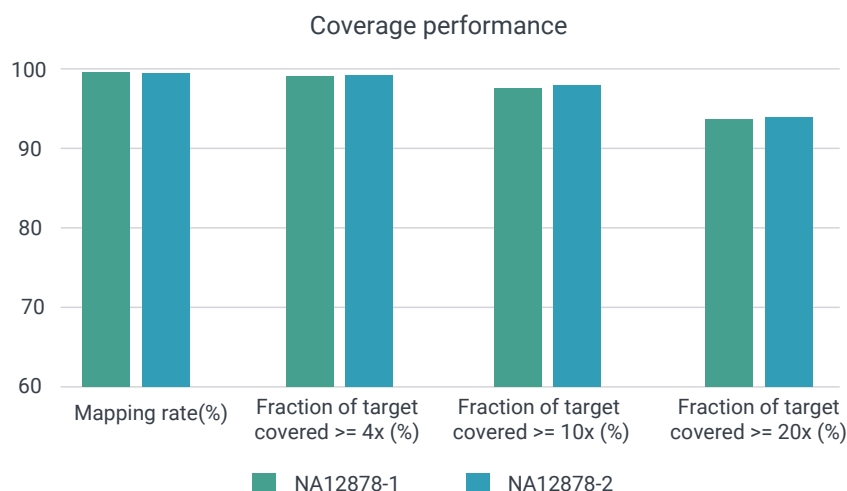
- ◆ Project experience of tens of thousands of exome samples
- ◆ Lower sequencing cost and lower index hopping rate by using DNBSEQ™ technology

## Sequencing Service Specification

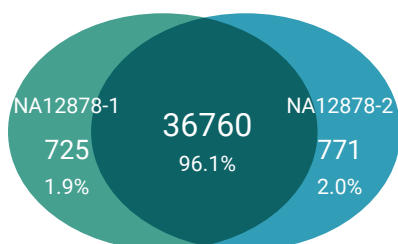
- ◆ Agilent Sureselect or BGI exome kit for library construction and enrichment
- ◆ 100bp paired-end sequencing options available

## Data Performance

The following is an example of rapid DNBSEQ™ output for a 100X WES project with standard sample NA12878. The capture kit used was Agilent Human All Exon V7, and each sample generated roughly 10G of data.

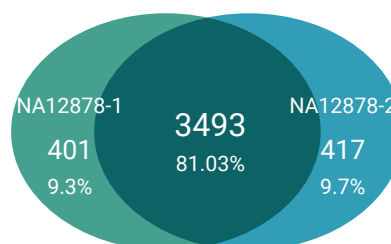


High repeatability, precision and sensitivity of SNP calling.



Sample	Precision	Sensitivity
NA12878-1	99.2%	97.5%
NA12878-2	99.2%	97.7%

High repeatability, precision and sensitivity of InDel calling.



Sample	Precision	Sensitivity
NA12878-1	88.1%	90.0%
NA12878-2	86.7%	89.4%

## Request for Information or Quotation

Contact your BGI account representative for the most affordable rates in the industry and to discuss how we can meet your specific project requirements or for expert advice on experiment design, from sample to bioinformatics.

[info@bgi.com](mailto:info@bgi.com)

[www.bgi.com](http://www.bgi.com)

## BGI Offices

### BGI Americas

One Broadway, 14th  
Floor Cambridge, MA  
02142, USA

### BGI Europe

Ole Maaløes Vej 3,  
DK-2200 Copenhagen N,  
Denmark

### BGI Asia

Building NO.7, BGI Park,  
No.21 Hongan 3rd Street,  
Yantian District, Shenzhen

### BGI Australia

L6, CBCRC, 300 Herston  
Road, Herston, Brisbane,  
Queensland 4006, Australia

For Research Use Only. Not for use in diagnostic procedures (except as specifically noted).

Copyright© BGI 2022. All trademarks are the property of BGI, or their respective owners. This material contains information on products which is targeted to a wide range of audiences and could contain product details or information otherwise not accessible or valid in your country. Please be aware that we do not take any responsibility for accessing such information which may not comply with any legal process, regulation, registration or usage in the country of your origin. Note, BGI's genetic testing products have not been cleared or approved by the US FDA and are not available in the USA. For Research Use Only. Unless otherwise informed, all sequencers and sequencing reagents are not available in Germany, USA, Spain, UK, Hong Kong, Sweden, Belgium or Italy. Certain sequencing services are not available in USA and Hong Kong. Please contact a representative for regional availability. The company reserves the right of final interpretation.



BGI Genomics



BGI\_Genomics

**BGI**  
We Sequence, You Discover